

The State of Mobile Workforce Management:

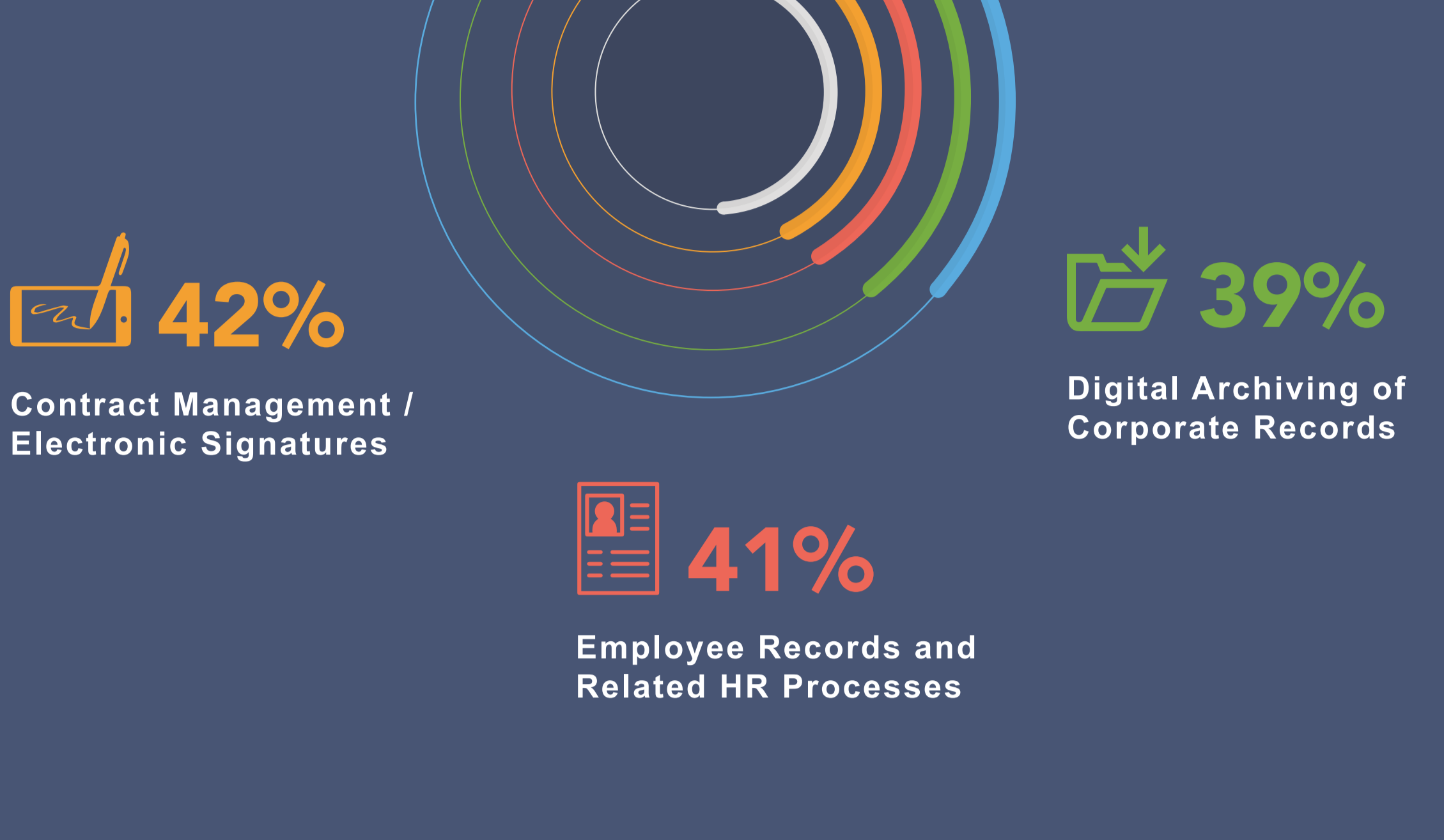
SURVEY RESULTS & INSIGHTS FROM BUSINESS OWNERS DURING COVID-19



What is a Mobile Workforce?

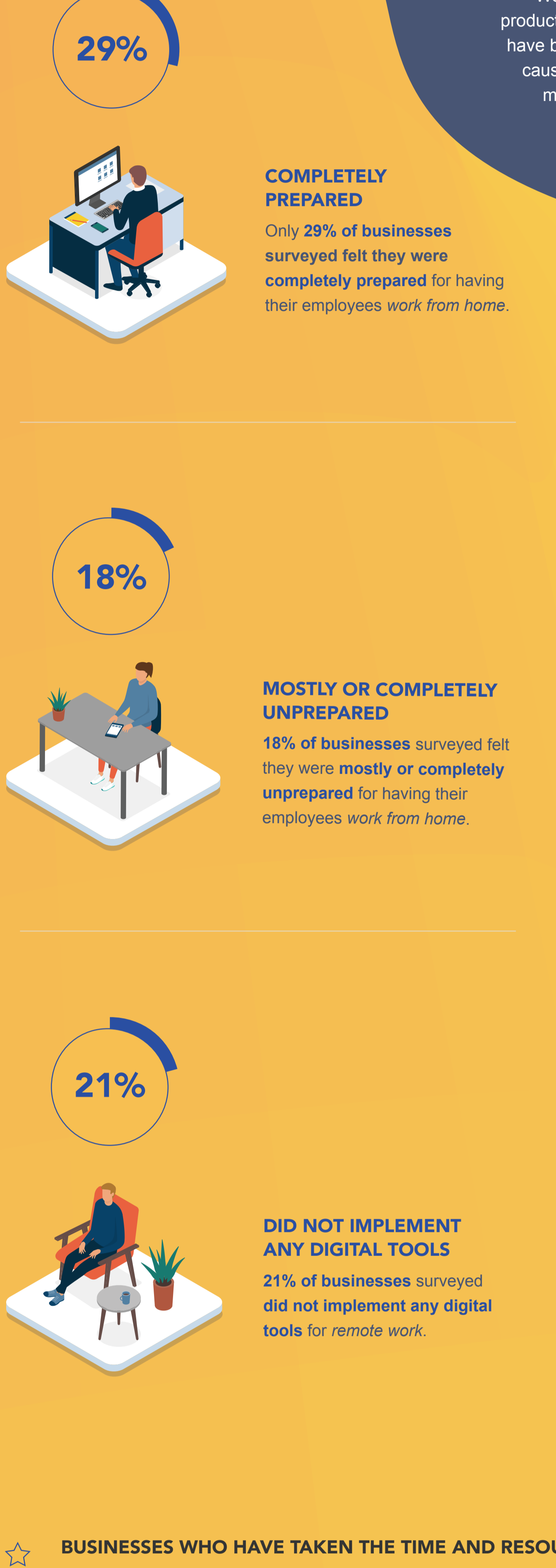
A *mobile workforce* is traditionally defined as a group of employees who work remotely and are connected by technology instead of being tied to a single physical location like an office. People who work from home may be the most common examples, but as mobile devices and *digital office automation tools* continue to evolve, anyone who performs work in the field that previously would have needed to be done at an office is also considered a mobile worker.

It's estimated that the **global mobile workforce will reach nearly two billion workers by the year 2022**, and *many businesses are already digitizing important processes by implementing tools for:*



Why is a Mobile Workforce Important?

Working outside the office is easier and more productive than ever before, but many companies have been slow to adapt. The global health crisis caused by COVID-19 has shown firsthand how many businesses are ill-prepared for remote work, either at home or in the field.



Not being prepared to pivot to a mobile workforce has left many companies scrambling to conduct business, and as a result, many employees are seeing their hours cut or losing their jobs.

REDUCE ALL EMPLOYEE HOURS
26% of businesses surveyed have had to reduce all employee hours as a result of the ongoing COVID-19 pandemic.

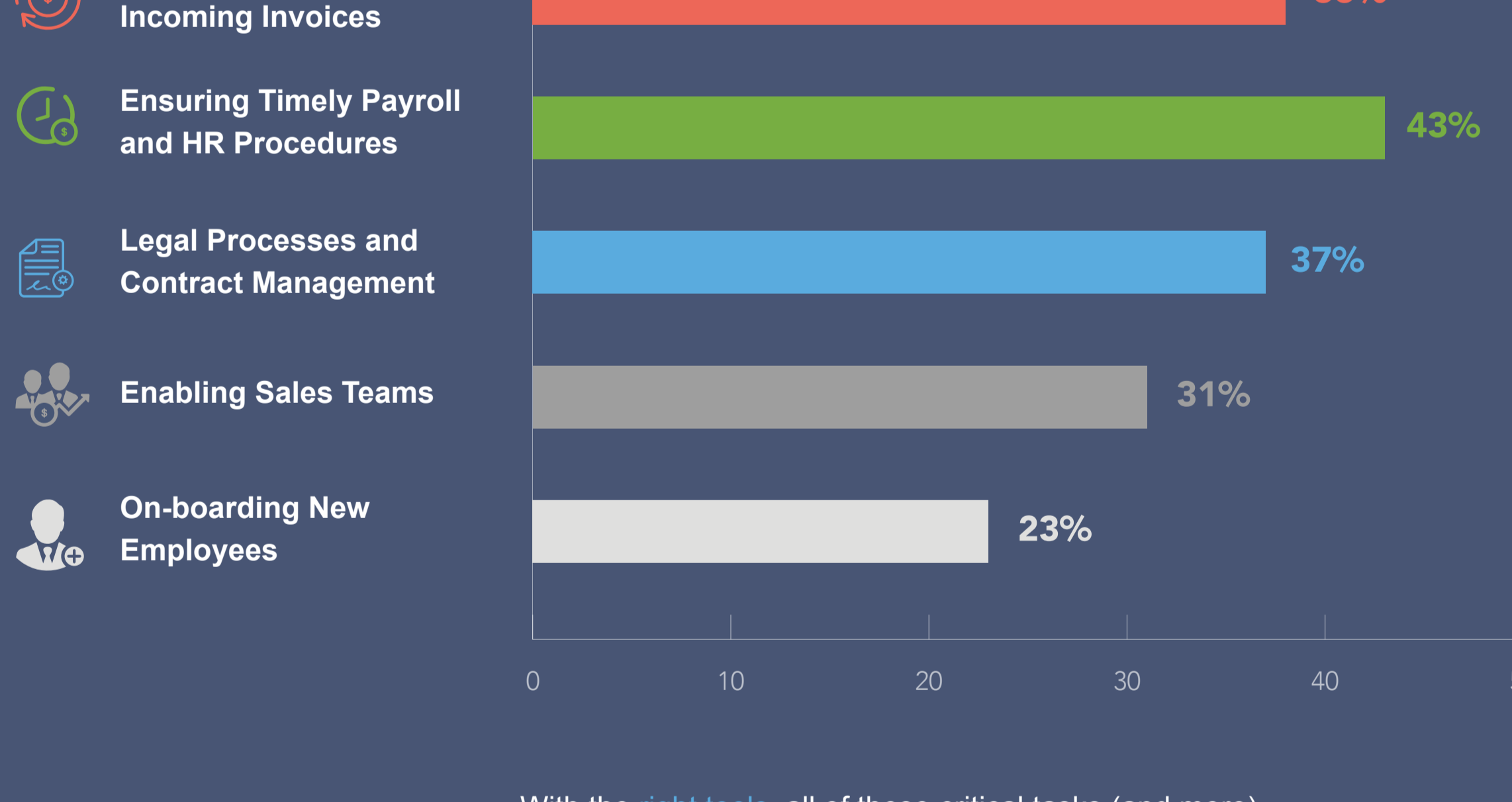
BUSINESSES WHO HAVE TAKEN THE TIME AND RESOURCES REQUIRED TO ESTABLISH A SYSTEM THAT SUPPORTS A REMOTE WORKFORCE ARE NOW SEEING THOSE EFFORTS PAYOFF.

73% of businesses surveyed said they considered cloud-based tools very-to-extremely valuable for managing a remote workforce during the COVID-19 pandemic.

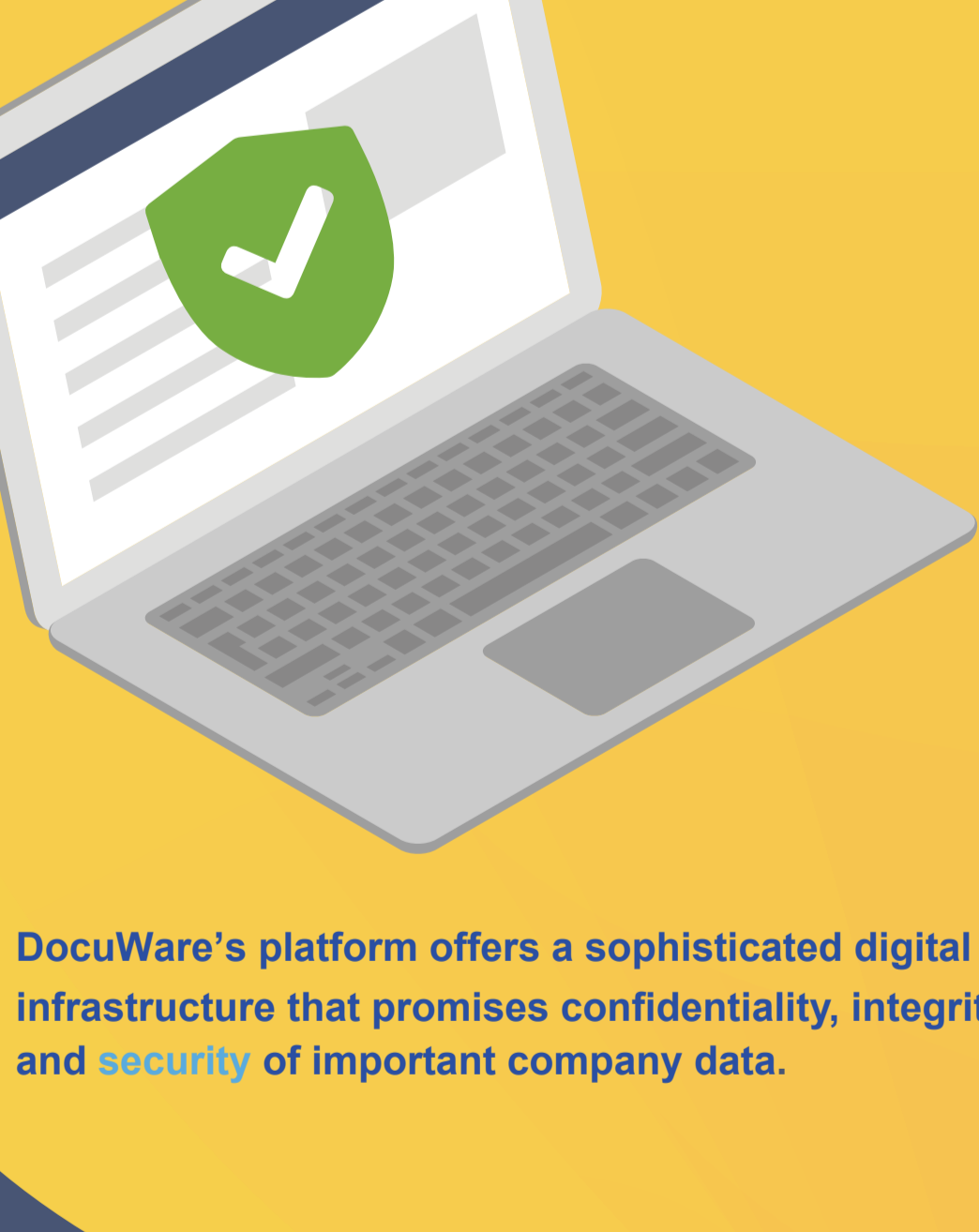


What processes are most critical to keep your business running effectively?

Our survey showed that businesses have found the following processes to be critical to keeping their business running smoothly during quarantine:



With the right tools, all of these critical tasks (and more) can be completed from the safety of your own home.



DocuWare's platform offers a sophisticated digital infrastructure that promises confidentiality, integrity, and security of important company data.

What about Security?

It may be easier than ever to create a mobile workforce for your business, but that also means your company's precious information is more vulnerable than ever.



My business is not operating at full capacity and we want to rise to the challenges of COVID-19 and beyond. How can we implement a robust mobile workforce?

If you're interested in seeing how DocuWare can help your business easily implement a secure, streamlined mobile workforce, [schedule your brief discovery call](#) followed by a personalized demo and free trial.

EXPRESSED CONCERNS ABOUT THE SECURITY OF COMPANY INFORMATION
65% of businesses surveyed expressed concerns about the security of company information while dealing with a remote workforce during the COVID-19 pandemic.

My employees are working from home, but I'm concerned about security and efficiency. How can DocuWare help?

If you want to learn more about how Key Digital can improve your existing mobile workforce, visit our website for [more information](#), read about our [solutions](#) for everything from invoice processing to employee management, or [schedule your brief discovery call](#) followed by a personalised demo and free trial.



Learn How to be Prepared for the Future by Optimizing Your Mobile Workforce

[Learn Now](#)